

THE BUSHLAND BULLETIN[©]

No. 86, WINTER (July) 2018



A publication of the Bankstown Bushland Society Incorporated
Reg. No. Y15576-12

www.bankstownbushlandsociety.org

For all enquiries contact The Secretary, Bankstown Bushland Society, PO Box 210 Panania NSW 2213, email greenaissance1@gmail.com Telephone: 97886232

NEW CONSERVATION AREA ESTABLISHED AT MONASH RESERVE

In late 2017 part of the riverflat under *Casuarina glauca* adjacent the creek at Monash Reserve was slashed by ride on mowers. The area was dominated by African Lovegrass, Paddys Lucerne, *Bidens pilosa* and *Ehrharta erecta* with Wandering Jew, *Asparagus aethiopicus* and *A. asparagoides* concentrated mainly along the bank of the creek. Stands of *Casuarina glauca* were thinned here and on other parts of the riverflat.

demarcate the perimeter of a regeneration site taking in the *Casuarina* stand on the riverflat adjacent the creek downstream of the bridge. In late July the star stakes were replaced with steel bollards.

Work is now well advanced with the African Lovegrass and all herbaceous weeds being treated when as seedlings in autumn/winter to head off flowering and seeding. Species long suppressed

by African Lovegrass and other invasive species are already starting to show in areas denuded of weed cover, most notable among them being *Einadia hastata*, *Microlaena stipoides*, *Tetragonia tetragonoides* and *Commelina cyanea*. These (and others that might yet be observed) are expected to spread into bare areas to develop the ground cover. Our thanks to CBC management for the initiative.

On later inspection, members of the Society noted that the slashing of dominant weeds species to ground level presented the opportunity for follow-up treatment by a combination of hand removal and spot spraying before the weeds regained their dominance. This work commenced in March this year. At the beginning of this undertaking we suggested to the CBC Bushland Officer that the area could be designated as a no mow zone to allow for natural and assisted regeneration. Subsequently, in June, star stakes were installed by Council to



Rejection of Riverlands Development Application

by Paul Wynn, 5-6-2018.

There have been some very promising developments on the Riverlands front. On 4th June, shortly after their reported gathering on Riverlands, the Canterbury Bankstown Local Planning Panel met to discuss the Development Application currently before them (DA-675/2017). Their business notes on the DA have been made available online and can be found from page 29 onwards at: https://www.cbcity.nsw.gov.au/CBLPP_04062018_AGN.pdf The conclusion of the Local Planning Panel (LPP) in the above document were as follows:

“The proposed development is not considered to be a satisfactory response to the environmental characteristics of the site and the applicable development controls. Council’s assessment has identified extensive issues associated with the proposed development and the information accompanying the application. // The issues identified and discussed throughout this report independently are important and each have a detrimental impact on the site and locality however cumulatively demonstrate that the proposal cannot be supported in its current form. The issues are also of a nature that would require substantial amendments to the application and

the preparation of further detailed studies and reports. On this basis, the application is recommended for refusal.”

I encourage anyone with an interest in Riverlands to read the report in full (pages 29-81). Strangely, it does make for very enjoyable reading. The developer has fallen so far short of all the planning requirements it is embarrassing. The LPP have listed no fewer than 14 reasons for refusal of this DA (see pages 78-81). They have failed to provide sufficient information relating to land remediation, environmental planning

instruments, general planning principles and they have failed to comply with local environment plans, site-specific provisions, tree preservation requirements and flood risk management.

The application was deemed contrary to the regulations as it did not contain sufficient information to indicate the likely impacts of the development on threatened species, populations, ecological communities or their habitats, and the amended Statement of Environmental Effects did not include a comprehensive assessment of the likely environmental impacts of

the proposed development. In short, the LPP thought that the Development Application was laughable. I expect that the developer is already drafting his next development application but it is becoming increasingly obvious that they lack the skill set for such an undertaking.

According to the report, this matter was reported to the Local Planning Panel (LPP) because of the high number of submissions received (74 in all). It is extremely heartening to see that the LPP have taken heed of the community’s concerns as communicated by their submissions. A big thanks to all those who took the time to pen a submission. You have helped effect change!



Riverlands Forest



Public protest at Riverlands March 2018 (pics by Skye Virgin)

Widening of Henry Lawson Drive

by Chris Brogan

It was announced in June that the NSW Liberal National Party Government has allocated substantial funding for widening Henry Lawson Drive between the Hume Highway intersection and the M5, the first stage being \$100M for the section between the M5 and Milperra Road at the cost of about \$45 million per kilometre. *The Torch* quoted Roads Minister Melinda Pavey as saying "The project will play a key role in facilitating growth along the corridor including redevelopment of the Bankstown Airport Precinct". Currently road widening is being proclaimed by both the LNP and Labor as the panacea to all Canterbury Bankstown's planning problems. I and many others disagree with this proposition.

I point out that the corridor referred to by Minister Pavey includes areas already set aside as contiguous parkland including Mirambeena

Regional Park, Kentucky Reserve and bushland and wetland on Milperra Road. A four-lane highway here facilitating access to expanding industrial estates on Bankstown Airport and container terminals at Moorebank, Villawood and elsewhere will have devastating effects on open space and residential environments along the Georges River.

A four-lane highway through Mirambeena Regional Park is hardly something to look forward to with many fine trees having to be sacrificed along the road adjoining Georges River Golf Course and in the vicinity of Lake Gillawarna. The future of the golf course itself is also a concern while the resurrection of the Business Park proposal on the Airport will renew threats to rare bushland at Airport Reserve.

Many people are looking forward to a road with smoother traffic flow, but the new version of the road will have all the existing sets of traffic lights and one, possibly two, new ones, thus the intended widening of the Drive is not so much an attempt to address genuine concerns about traffic congestion, it is a Trojan Horse for the industrialisation of the Georges River open space corridor and inappropriate developments such as Riverlands that subject our area to increasing densification pressures.

Behind the Widening of Henry Lawson Drive

by Erik Rakowski

This is far worse than just your standard election pork barrelling. This is about trucking containers to Villawood, Yennora and Moorebank. This is about more "road capacity" equals more uplift in development and densification.

Currently there are Intermodal Container Terminals at Enfield, Chullora and Yennora. All three terminals will induce trucks onto the

M5 in huge numbers, with a significant portion disembarking at HLD to reach Villawood, Yennora and Wetherill Park (as well as some local market at Milperra Revesby). There are two more proposed and partially underway terminals at Villawood and Moorebank.

Traffic Modelling shows and M5 commuters will know (because they live it) that Container Trucks get off at King Georges Road to reach Enfield and Chullora. Then the majority of the rest get off at Henry Lawson Drive to reach Villawood, Yennora and Wetherill Park. In my 34 years living in Bass Hill and now Wattle Grove - Henry Lawson Drive has always been a beautiful but frustrating traffic jam. To apparently suddenly notice and claim to be fixing it - is disingenuous at best.

As we overpopulate our city, in turn creating excessive importation of finished goods, to be supplied by one bottle neck - Port Botany - we will see 10s of 1000s more Container Trucks on Sydney's roads in part because Freight Rail has poor capacity at Port Botany and trucks are cheaper - which results in Container Terminals inducing demand for trucks not taking trucks off the road. Thus, with Villawood coming online and strong demand in Yennora and Wetherill, I would expect a huge uplift in truck numbers on HLD, which is why we see "leaked" info as a head nod to trucking companies that it will be widened from the off ramp to Milperra Rd (at least). Thus, the road expansion will induce demand as well.

All the while developers will see the road widening as the signal to seek higher density along HLD, which would in turn increase local and commuter through traffic. Such that the situation could actually be worse by the time their done "fixing it". Moreover, \$100M doesn't get you much road, but it might be enough for WSU to recycle the Uni into medium or high-density housing.

www.localnewsplus.com.au C-B Torch 17-1-2018

Upset over mature gums getting chop for upgrade



Bankstown Bushland Society's Chris Brogan beside one of the large mature Eucalypts removed from the roadside reserve at Georges Hall during December.

By MICK ROBERTS

THE need to give at least two large gum trees the chop from roadside reserves at Georges Hall, has been questioned by the Bankstown Bushland Society.

The society's Chris Brogan said he was shocked to see contractors removing the large mature Eucalypts from the roadside during December.

"I was told they were being removed by Sydney Water," Mr Brogan said.

"I'm disappointed at the lack of community consultation before they were removed."

Mr Brogan said the trees were of significant age, and

their felling would impact further the gradual decline in habitat for local fauna.

Late November, the council was notified by Sydney Water that the Blue Box Gum trees may need to be removed in order to upgrade a pump station at Kentucky Reserve.

One of the trees removed was on Roads and Maritime Services land, on Henry Lawson Drive. A second tree, which was also removed, grew on Sydney Water property.

A Sydney Water spokesperson said the tree removal was necessary as part of the upgrade of a waste water pumping station in Kentucky Reserve.

"Work started in late 2017

and we expect the project to continue throughout 2018," the spokesperson said.

"This is a necessary upgrade to a critical asset that will improve efficiency, capacity and reduce the risk of having environmental pollution around the reserve area."

The spokesperson said the tree removals were carried out with qualified arborists and ecologists as part of a tree management plan.

Sydney Water would continue to consult with the council and Bankstown Bushland Society to ensure tree management and restoration plans were suitable for the area and community.

Fencing for Lansdowne by Col Gibson

In 2007 the then Bankstown City Council allocated funds for protective fencing around significant bushland containing Endangered Ecological Communities in Bankstown. Two areas of particular concern to the society were our grant sites at The Crest and Lansdowne Reserve where rubbish dumping and access to bushland by BMX bikes were causing ongoing problems. The Crest was favoured with a 1.8 metre high cyclone wire fence around its northern perimeter adjoining the sportsfields, a fence which has proven very effective in restricting these damaging impacts. The same can be said for nearly all the sites that benefitted from fencing around that time.

However, though we were hoping then to see a similar fence installed around the Tillet Parade frontage of Lansdowne Reserve, this did not eventuate and a much smaller 1 metre high fence was erected. We also wanted the line of telegraph poles on concrete shoulders that were in place at the time to be retained in front of the fence as a protection measure for the fence against vehicular impacts but these were removed and not replaced.

The Tillet Parade frontage is a noted chronic illegal dumping site where truckloads of rubbish including woodchip, tree prunings and building rubble frequently deposited outside the fence between Tillet Parade and Liverpool Road. This has been an ongoing problem for council which despite regular monitoring of the site it has been unable to defeat. To the detriment of the bushland an amount of this rubbish finds its way over the fence onto the bushland margin, some tipped straight over the low fence or walked in by dumpers to be deposited in places that cannot be seen from Tillet Parade. In the latter case dumpers make use of two walk-through gaps in the fence left as

entry points for walkers. Rubbish inside the bushland is not so readily noticed from the outside and so is being left in situ for indefinite periods.

When our group was doing regular bush regeneration at the site with Environmental Trust grants between 2003 - 2013 we took it upon us to remove any rubbish we found thrown into the bush and maintained a clean margin right up to the edge of Tillet Parade. When the area became a Biobanking site we found that we were no longer eligible for Environmental Trust grants, the Trust taking the position that since the site now had another guaranteed source of funding that it would no longer commit to it. As a consequence we stopped working there and turned our attention to other areas, and since then the rubbish has been allowed to accumulate along and inside the bushland margin as the accompanying images show.

Recently we went back to inspect the achievements of the work undertaken by Council contractors as part of the Biobanking project and were overall very pleased to see the good results. However, the successes aside, the great failure at the site is the fence in question. This simple cyclone wire fence is not strong or high enough to work effectively as a barrier to illegal dumping impacts on the bushland margin which include car parts, pallets, household appliances, bricks and rubble, garden refuse and what is probably worst of all in terms of its negative effects on bushland – woodchip mulch. The corner of Tillet Parade and Lansdowne Parade also serves as a truck parking bay where the casual impacts of cars, trucks and heavy

machinery regularly cause breaks in the fence. When the gate on Lansdowne Parade is occasionally left unlocked, unauthorised vehicles are able to enter and deposit loads of spoil and tree prunings.

This situation can to a great extent easily be remedied by replacing the low chain wire fence with a taller and stronger 1.8 metre high security fence along the Tillet Parade frontage between the corners of Lansdowne and Watt Parades. This type of fencing is in place at other sites including Wonga Smith's Bush at Uni Western Sydney and Davidson Street Bush on Hume Highway. To protect it from potential vehicular impacts a line of poles on concrete shoulders should be reinstated at the foot of the fence. Furthermore, there is no need for open entry points along this fence: access to the bush for those who want to enjoy it are well catered for by the entry points at the two ends of the fence (corners of Lansdowne and Watt Parades).

With about \$1 million in the Biobanking fund and \$16.6 million recently announced for parks in the area surely there is ample to provide the Lansdowne Reserve Biobanking site with the solid fence it deserves and needs for protection. To this end we have written to the Mayor, the General Manager, the Bass Hill Ward councillors, the Office of Environment & Heritage and local member of parliament Ms. Tania Mihailuk.



Is Moorebank Intermodal Australia's Largest Confidence Job?

by Erik Rakowski, Secretary RAID Moorebank, 8-2-2018.

At a total cost between \$6 billion [best case] and \$13 billion dollars [likely case] and \$13 billion [likely case] for State and Federal Taxpayers, without any proven public good and with supply chain retardation expected across the road and rail transport network. One must seriously consider who benefits from this deal?

Why would the Government disrupt the country's largest economy with another doomed to fail public-private-project? Why has the Government been so intent on a deal that ultimately disadvantages its own citizens and taxpayers? Major media outlets like Crikey, Australian Financial Review and the Guardian reporting on a potential credit card scandal. If proven true, the community will have yet another example of politically appointed bureaucrats showing contempt for hard earned tax dollars, and the taxpayer for whom they work. Just another insult atop a multi-billion dollar injury.

Individual professionalism and corporate accountability is crucially important, but it should not overshadow or distract from investigating the collective culture of Moorebank Intermodal and Government Business Enterprises generally. To focus solely on credit card misuse is akin to a prison warden worrying about the icing on a cake that has had the prison keys baked into it. It has been suggested that a second audit is merely 'routine', but this appears to make light of a serious issue and distracts from

the numerous flaws in the deal.

"One only needs to review the first audit report to find: *"value for money progressively eroded"* and *"the procurement process was not sufficiently competitive"*. That with *"the open access arrangements applying to the IMEX and interstate terminals, but not the warehousing component of the Moorebank precinct"*, the ANAO was unable to provide assurance that *"the desired national productivity benefits of the project will be realised."* Surely this is not business as usual, and that is why we vehemently support Anne Stanley MP, the Federal Member for Werriwa, and her call for *"further investigation and proper transparent processes."*

However, we strongly suggest that Ms Stanley do more. We ask her to sit down with her Senatorial Colleagues Hon. Doug Cameron, the Hon. Deborah O'Neill and Hon. Jenny McAllister and work with

Senator Lee Rhiannon and the Cross Bench to establish a Parliamentary Inquiry. We also call on Rod Sims and the ACCC to investigate Moorebank Intermodal Company and the ANAO Audit Report. The Australian Competition and Consumer Commission ought to concurrently re-investigate Qube Logistics' cannibalisation of its major competitor Asciano in conjunction with reports of Qube's recent move on MCS Maritime Container Services.

Our Community looks forward to contributing to the second audit. For a copy of RAID Moorebank's submission to the ANAO's first Performance Audit please email.

info@raidmoorebank.org

(Artist's impression of the completed Moorebank Intermodal on the Georges River floodplain).



Riverlands Coastal Swamp Oak Forest Endangered Ecological Community

The following is part of the Society's letter to Statewide Planning Pty. Ltd., the General Manager Canterbury Bankstown Council and the State & Federal Ministers for the Environment re the listing earlier this year of Coastal Swamp Oak Forest as an EEC under the Environmental Protection & Biodiversity Conservation Act.

We write in regard to Development Application No DA-675/2017, made by Statewide Planning Pty Ltd and lodged with Canterbury-Bankstown City Council in July 2017 and February 2018 (the 'Application') concerning a proposal for development of the former Riverlands Golf Course site at 56 Prescott Parade Milperra NSW 2214.

We draw your attention to the listing of Swamp She-oak Forest as an Endangered Ecological Community (EEC) under the Commonwealth *Environment Protection and Biodiversity Conservation Act 1999* (EPBC Act). Swamp She-oak Forest is a 'Matter of National Environmental Significance' (MNES) under the EPBC Act. Please refer to the 'Conservation advice (incorporating listing advice) for the Coastal Swamp Oak (*Casuarina glauca*) Forest of New South Wales and South East Queensland ecological community' available at <http://www.environment.gov.au/biodiversity/threatened/communities/pubs/141-conservation-advice.pdf>

According to an environmental

report lodged with the Application ('Flora Assessment' prepared by Anne Clements and Associates Pty Ltd, dated 23 January 2012) a patch of forest meeting the definition of Swamp She-oak Forest occurs on the proposed development site. This patch is likely to be impacted adversely by the development proposed in the Application. From aerial imagery, we estimate that this patch of Swamp She-oak Forest is approximately 3 ha in area, and we understand that it is currently in good condition with a high level of native ground cover. According to the Conservation Advice referred to above, it is likely to be in Condition Category B or Condition Category C. All patches of the EEC in Condition Categories A, B or C are subject to the referral, assessment, approval and compliance provisions under the EPBC Act.

To our knowledge, no referral has been made to the Commonwealth Environment Minister in regard to the proposed development. We therefore draw your attention to the self assessment and referral obligations in the EPBC Act that require development proponents to seek approval from the Commonwealth Environment

Minister prior to taking actions that might have harmful impacts on Matters of National Environmental Significance, such as the Swamp She-oak Forest.

Canterbury-Bankstown Council, as the primary determining authority for DA-675/2017, may have limited options as a local government for referring MNES under the EPBC Act to the Commonwealth Environment Minister. However, it is clearly important that Council receives determination from the Commonwealth Environment Minister regarding the MNES before making its own determination on the DA-675/2017.

As a concurrent authority, the NSW Government may have certain obligations under the 'New South Wales Assessment Bilateral Agreement' with the Commonwealth Government. Clause 5.1 (a) of the Bilateral Agreement requires NSW to inform proponents when an action needs to be referred to the Commonwealth. Also, under Section 69 of the EPBC there are provisions for NSW to refer the matter to the Commonwealth Minister when required to.

(Coastal Swamp Oak Forest and sedge (Bolboschoenus caldwellii) wetlands at Riverlands, pic by John Gibson).



BANKSTOWN BUSHLAND SOCIETY NOTICE BOARD

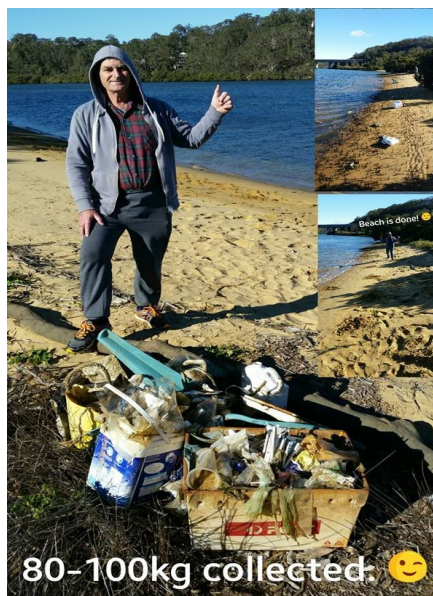


**Check out BANKSTOWN
BUSHLAND SOCIETY on
Facebook**

The BBS Facebook page provides us opportunities for posting information relevant to the natural environment and flora and fauna of our bushland regeneration projects, nature walks and such. Anyone interested in the Georges River and bushland generally is welcome to join our page.

CLEAN UP AT BEAUTY POINT FORESHORE

On Sunday 19th August we will be joining **Oatley Flora & Fauna (OFF)** in a clean up of the river foreshore at Beauty Point, Padstow Heights starting at 9 am. We will meet at Roma Reserve at end of Roma Avenue, Padstow Heights. The Riverkeeper will provide bags for the rubbish and collect the filled bags after we have finished. This is a beautiful bushland area that not very many would have seen up close. We look forward to seeing you there. Skye 0411584295 is the contact for BBS.



80-100kg collected. 😊

**Local Environmentalist and
RAID campaigner,
Erik Rakowski
will present
TRUCKS, TRAFFIC
& YOU**

**at our next meeting on
August 15th, 7.30pm. Come
and hear Erik talk about the
impacts and implications of
current and looming road
expansion projects in our
area.**



**Bushland Society meetings
are held at Padstow
Progress Hall, Ryan Road,
Padstow, on the 3rd
Wednesday of the month
(except December &
January), in the Wal
Browning Meeting Room
at rear of hall.**

Time: 7.00pm.

Tea and biscuits provided.

All welcome.

**Further enquiries please ring
Col on 97886232.**

BANKSTOWN BUSHLAND SOCIETY COMMITTEE for 2018

President:
Christopher Brogan

Vice President:
Peter Gardiner

Secretary:
Colin Gibson:
9788 6232

Assistant Secretary:
Skye Virgin:
0411584295

Treasurer:
John Gibson:
9772 3549

Committee Members:
Darryl McKay
Erica Brogan
Wal Browning

***Bushland Bulletin
Editor:***
Colin Gibson

© Copyright 2002 Bankstown Bushland Society Incorporated. This publication is copyright. Other than for the purposes of and subject to the conditions prescribed under the Copyright Act, no part of it may in any form or by any means (electronic, mechanical, microcopying, photocopying, recording or otherwise) be reproduced, stored in a retrieval system or transferred without prior written permission. Inquiries should be addressed to the Editor.

JOIN THE BUSHLAND SOCIETY



The Bankstown Bushland Society is an incorporated association under the Associations Incorporation Act (NSW) 1984.

We are Bankstown's only incorporated association dedicated to protecting our City's environment.

The Society's objects are:

- To protect the environment of Bankstown
- To assist other persons in the protection of the environment in Bankstown
- To foster better community awareness of environmental issues
- To lobby through Government, commercial and other persons for the maintenance of a high quality of life through the progressive improvement of the environment

Bankstown Bushland Society has lobbied effectively for the protection of bushland and the natural environment since 1988. With your support we can continue the work. By joining the Society you can make an important contribution to our local environment.



Yes, I wish to join the
Bankstown Bushland Society Inc:

Name: _____

Address: _____

Suburb: _____ Postcode _____

Telephone Number: _____

Attached please find my payment of:
(\$.00) _____
(amount in words)

Membership fees

Family/Group - \$20

Ordinary - \$15

Concession - \$10

"student/unwaged/pensioner"

Send payment to:

**The Secretary,
Bankstown Bushland Society Inc.
PO Box 210
Panania NSW 2213**

Or pay by direct transfer to

**BSB 512 170 Account Number 100087319, AND put
your name on the transfer form.**



**Bankstown Bushland Society Inc.
PO Box 210
Panania NSW 2213**

